

QUEENSLAND

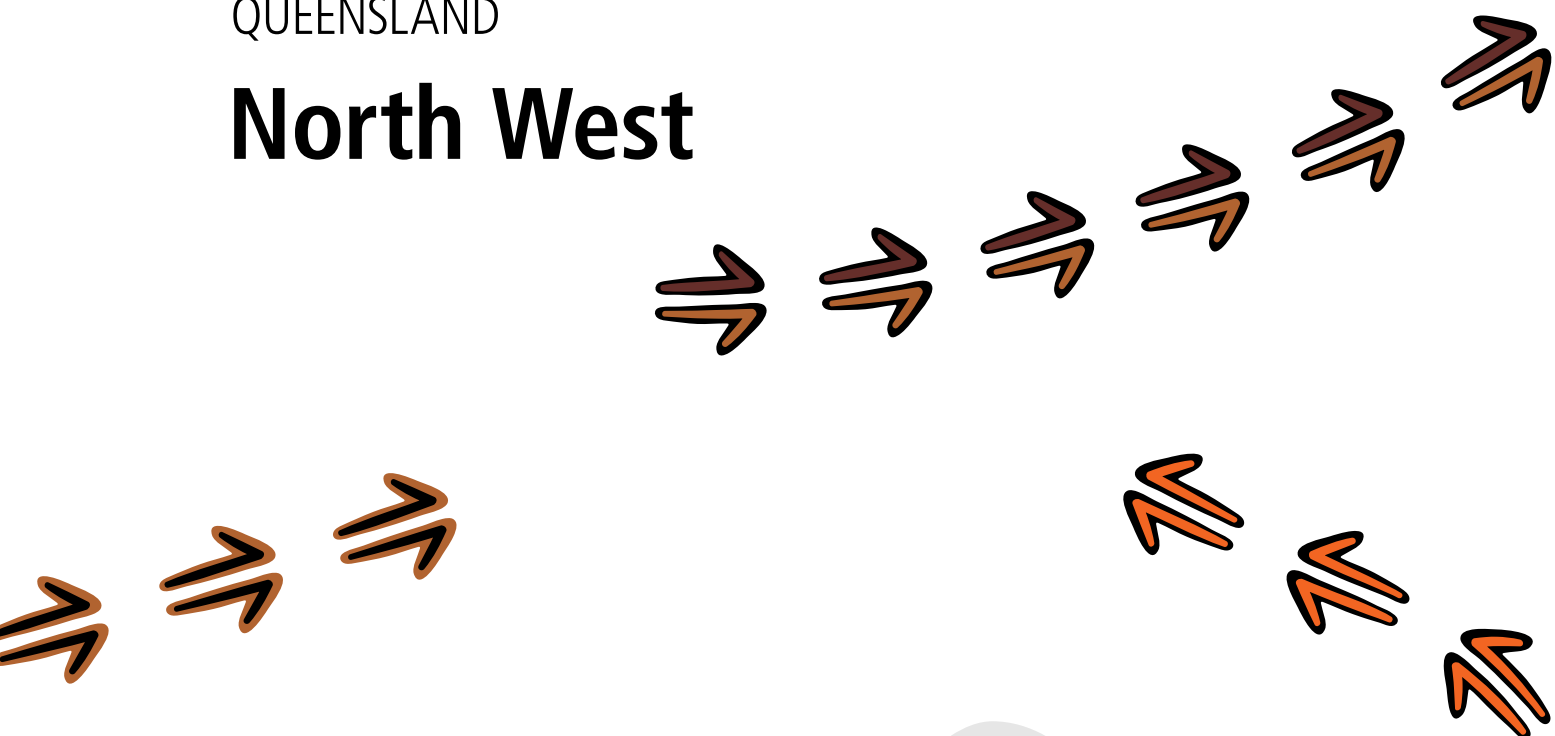
North West



2016 (CENSUS STORY)

QUEENSLAND

North West



2016 CENSUS STORY

Glossary

Caring for Children	People who spent time caring for a child/children (under 15 years) without pay in the two weeks prior to Census night.
Children	Are people aged under 15 years of age.
Completed Year 12	Includes people aged 15 years and over who are no longer attending primary or secondary school.
Families	Includes couple families with and without children, single parents, and other families.
Houses	Includes private dwellings, occupied and unoccupied. A dwelling is a structure which is intended to have people live in it, and which was habitable on Census night, for example houses, flats, caravans and humpies.
Language	Top Australian Indigenous language spoken at home.
People	Total population figures are based on place of 'usual residence' or where that person usually lives.
Students	Includes everyone who said they were attending a school, university or technical institution.
Weekly Income	Includes people aged 15 years and over and is the middle value (median) of total weekly personal income.
Working	Includes everyone who said they were working full-time or part-time, or were away from work. This does not include people involved in the Community Development Program (CDP).

Contents

Glossary	2
Artwork	4
The ABS says thanks	5
Queensland	7
North West Region	8
Boulia	10
Burketown	12
Camooweal	14
Cloncurry - McKinlay	16
Diamantina	18
Doomadgee	20
Mornington	22
Normanton	24
Winton	26
Know more	28



Artwork

The artwork in this story book was commissioned by the Centre of Excellence for Aboriginal and Torres Strait Islander Statistics to embody what the centre represents. The work incorporates Larrakia Artist Shaun Lee's (AKA Gwarkabah's) diverse heritage, through contemporary and traditional hand-created designs. Using spray-paint medium on hardwood, the work features and combines various traditional stories and symbols from local areas and across Australia. Together, the artwork tells the story of the Centre of Excellence and its people. The designs were digitalised by Dreamtime Creative.



Traditional stories and symbol break down



Star shape: National courage – representing navigation, called the 'Guiding Star'.

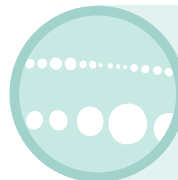
Core centre design: Black represents the earth and the soil; the pattern symbolises an 'ageless recognition' used through Northern Australia, and perhaps wider Australia. An 'ageless recognition' is the closest translation into English. It's derived from a number of terms that describe an instant identification of a particular established symbol of connection or linkage.



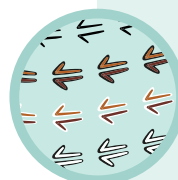
Message sticks: Representing unique messages; signifies that a story is being told and needs to be received.

Is a connection to and from Larrakia Country, and between other Indigenous cultures.

- **Top message stick:** Country and regions across Australia
- **Middle message stick:** Coming together and meeting
- **Bottom message stick:** Two half-moons facing inwards represents the people; and the two lines on either side identifies that the message is inclusive of both male and female.



Dots: Symbolises the link between people, organisations, States and Territories, representing the importance of strong linkage and communication. A dot in a dot in a dot: Traditional Larrakia design colours represent the artist's own diversity – his Northern Larrakia, Wardaman, Karrijarri heritage, and his acknowledgement of all of these people.



Kangaroo tracks: Acknowledge the journey and pathways that have been taken; and symbolises moving forward, as the kangaroo is known for not moving backwards.

Track colours: Represent diversity and the differences between people. The kangaroo is an iconic Australian animal, representing our uniqueness, and recognition Nationally.



Paperbark vessel: Carrying safely all the gathered information and knowledge

THE ABS SAYS THANKS



The Australian Bureau of Statistics would like to thank the Aboriginal and Torres Strait Islander communities who helped to make the 2016 Census a success.

North West, your numbers are in.

The results of our latest national Census reveal who we are, where we live, what we do, and where we're headed.

The information we've gathered will inform planning and decision-making for our future, like where we build schools, roads and hospitals. Census data helps us decide where we need funding and services across every community in Australia – this means your community, too!

So here is the story for North West – a living biography updated every five years.

Future surveys

The ABS also has other surveys. We thank you in advance for your help in completing these. They may include questions about your health, employment or other details. You can see how this information helps your community at www.abs.gov.au/participant-info.



Photos by the Australian Bureau of Statistics, taken from the Jabiru township.

Australia



23.4
million

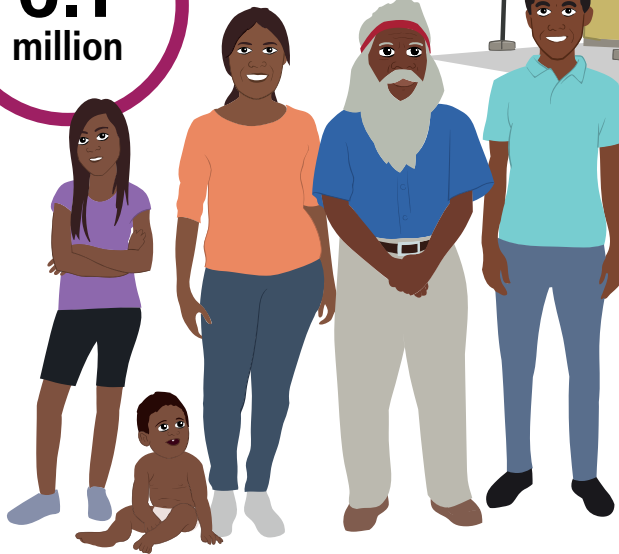
People

649 168

Aboriginal and/or
Torres Strait
Islander people

FAMILIES

6.1
million



9.9
million

HOUSES

11.9 million
Females



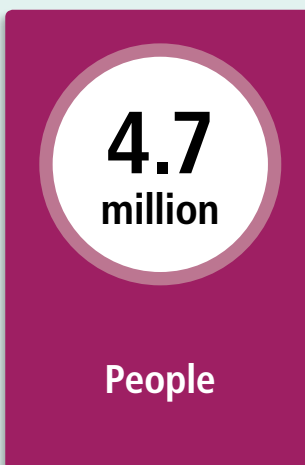
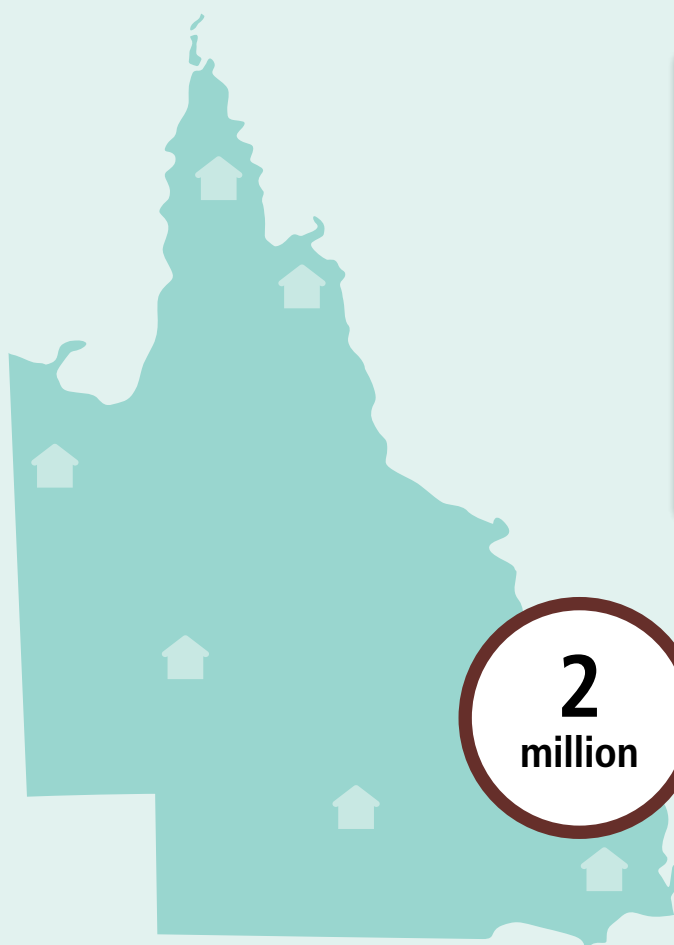
11.5 million
Males



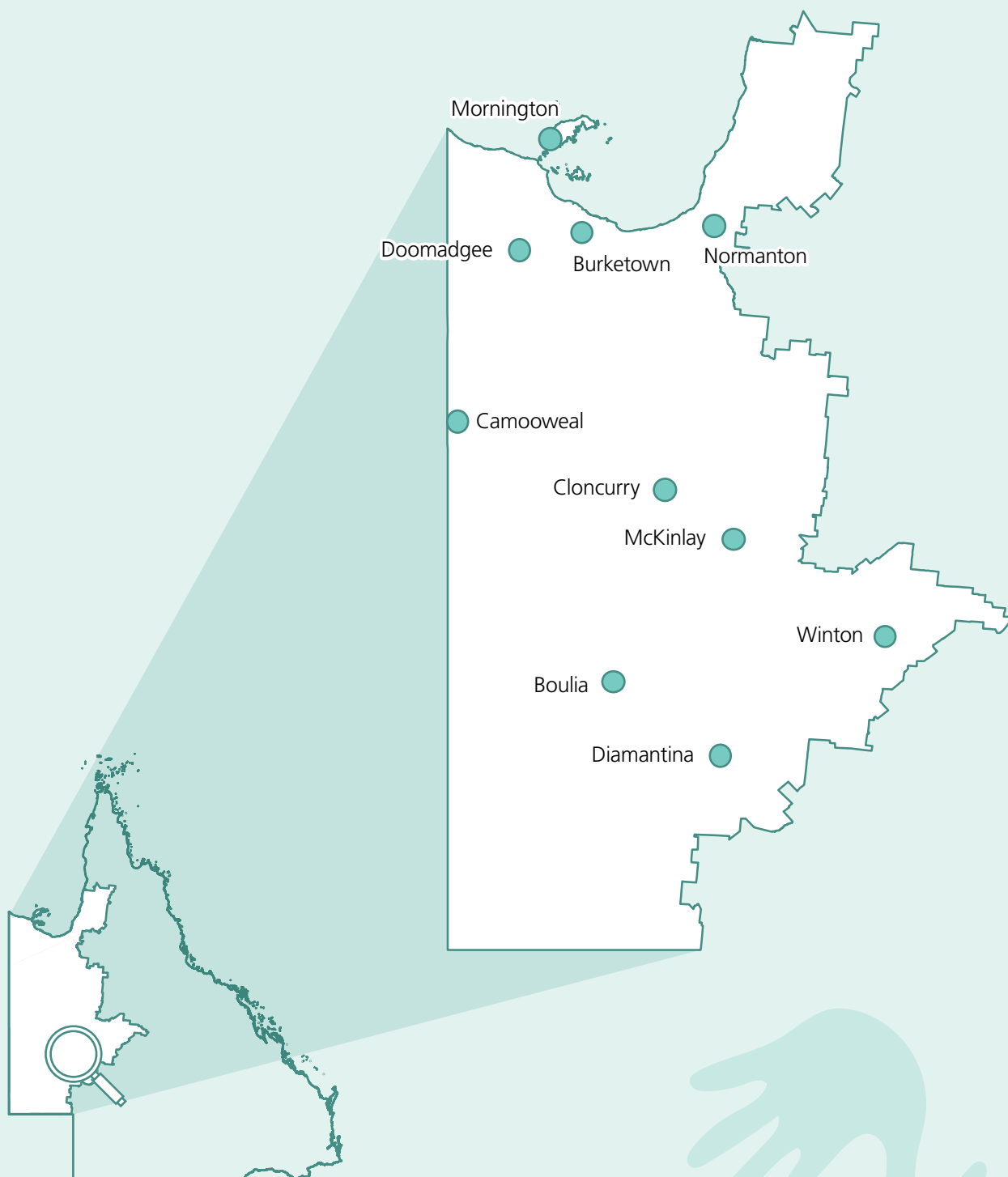
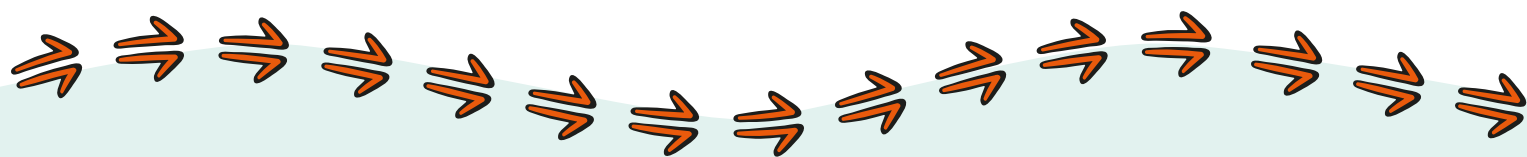
4.4 million
Children



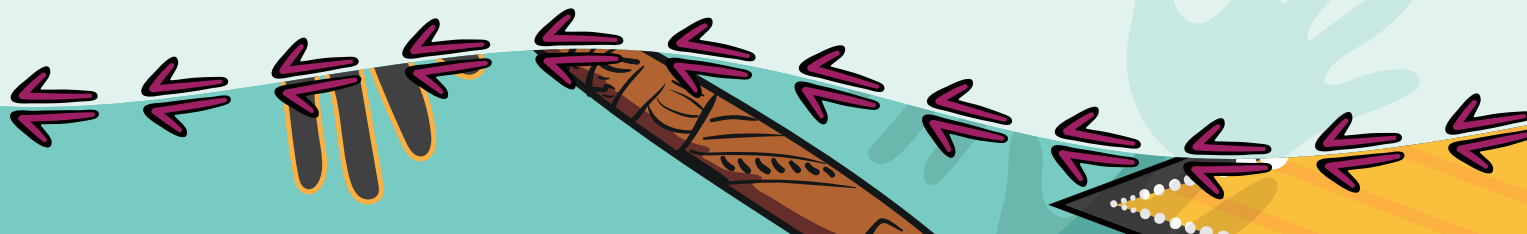
Queensland



North West Region



A large, stylized illustration of two hands, one light blue and one teal, reaching upwards towards the center of the page. The hands are positioned as if they are holding or supporting something.

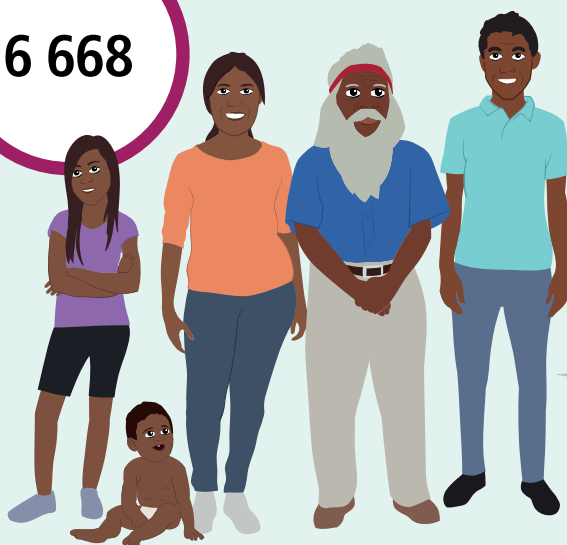


North West Region



FAMILIES

6 668

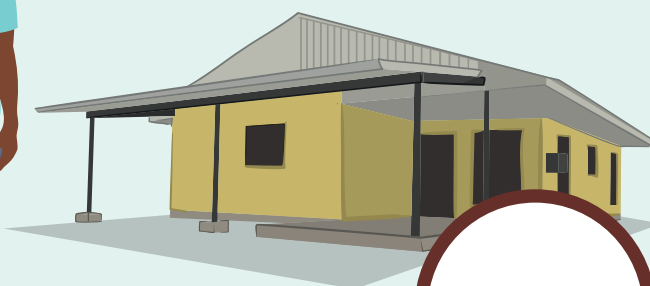


29 171

People

7 376

Aboriginal and/or
Torres Strait
Islander people



14 256

HOUSES

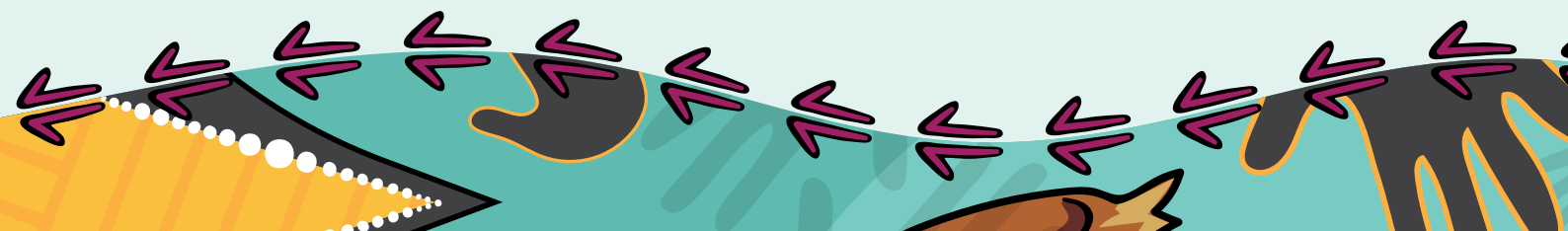
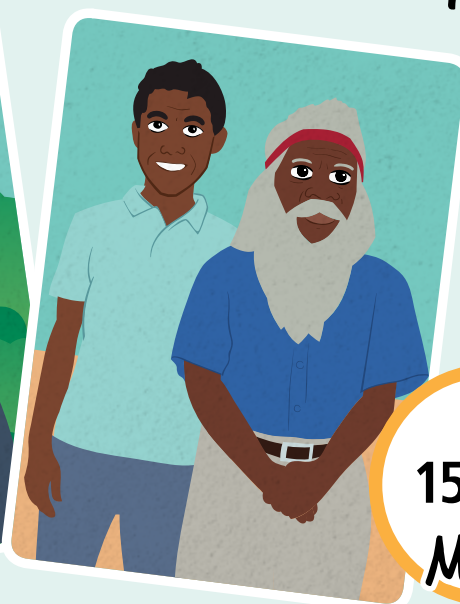
13 948

FEMALES

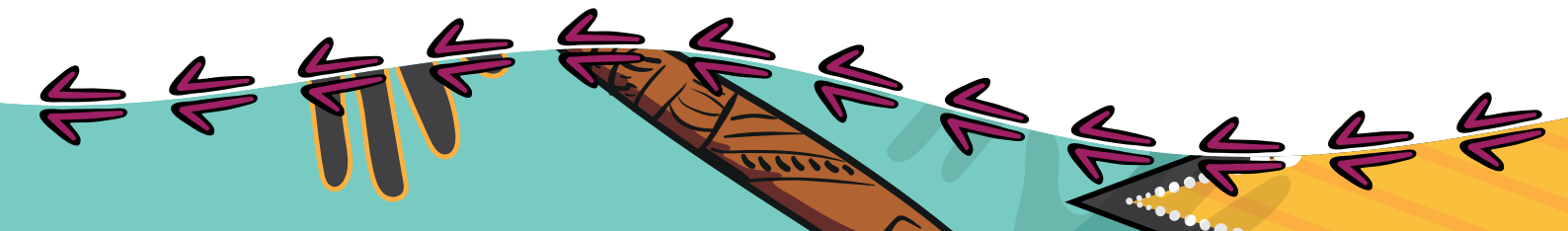
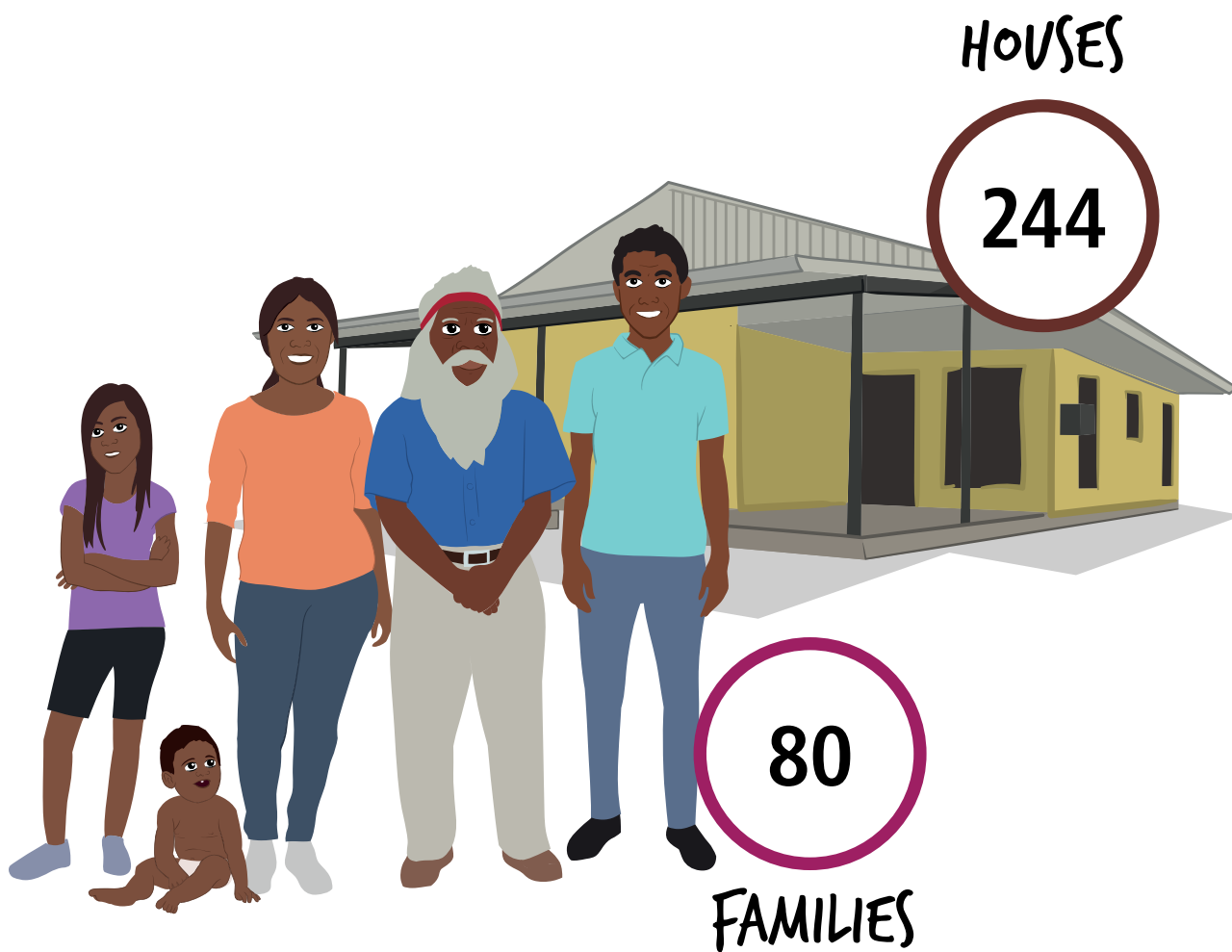
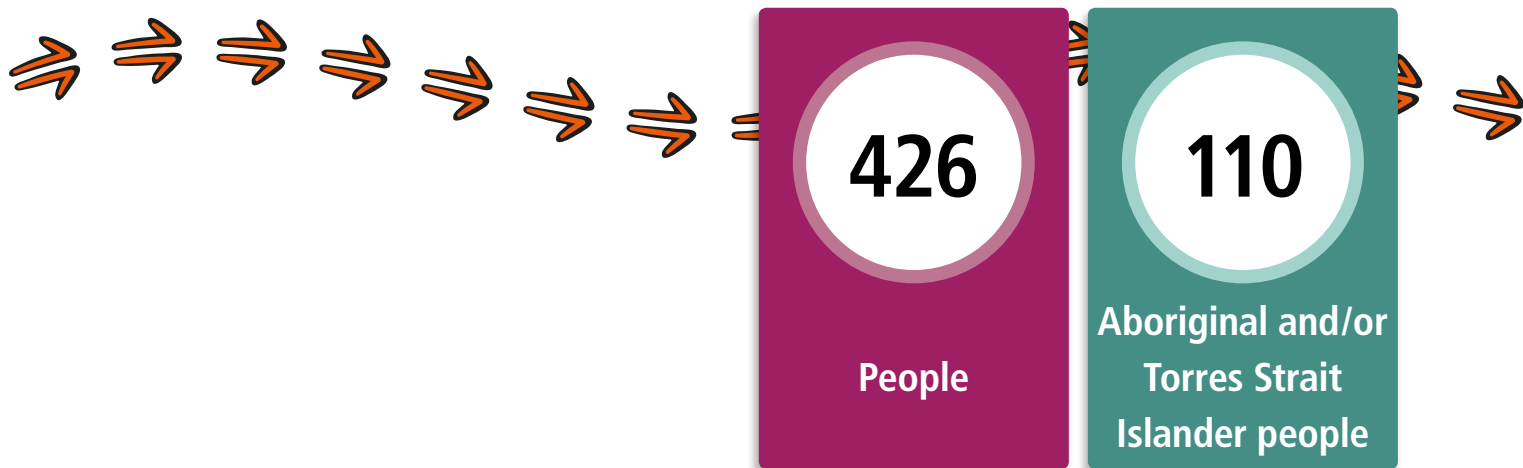


15 223

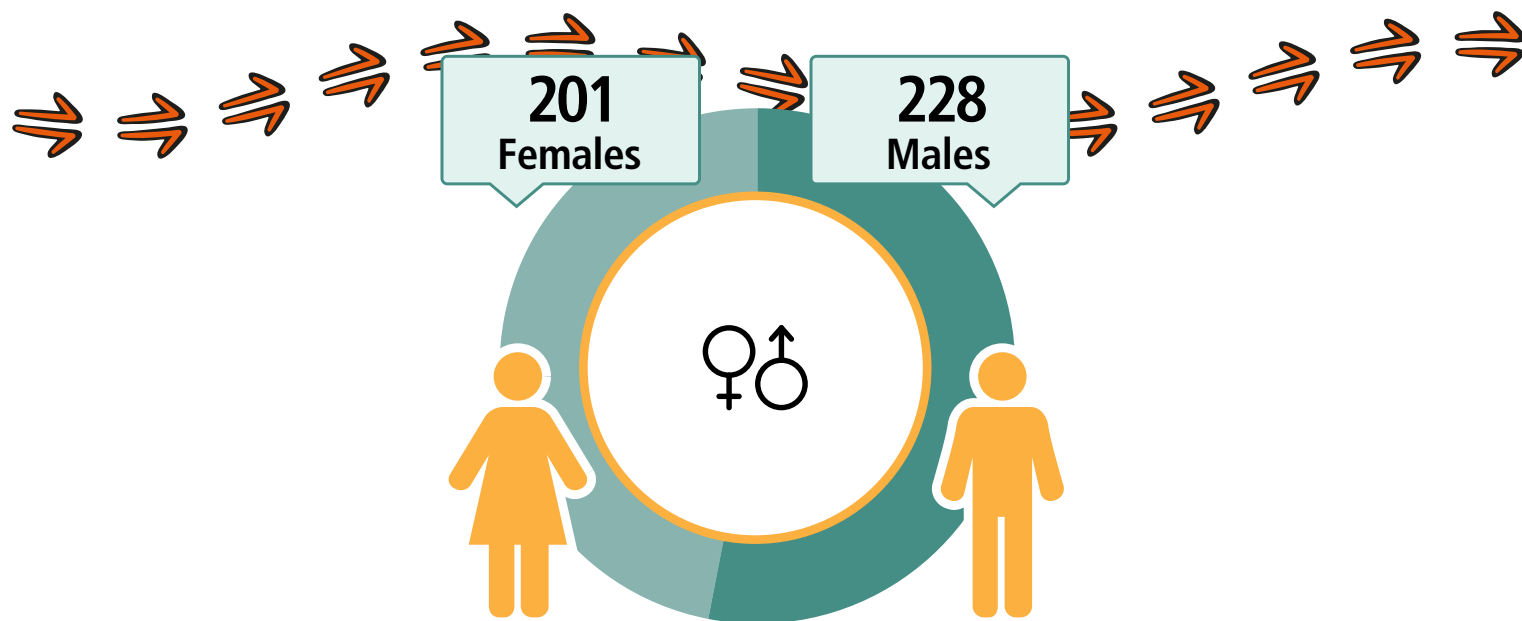
MALES



Boulia



Boulia



CARED FOR CHILDREN



14%

213
Working



\$755
Weekly Income



150
Students



110
Completed
Year 12



Geography: Boulia ILOC

A decorative border at the bottom of the page featuring a stylized Aboriginal art pattern with purple, yellow, and black wavy lines and arrows.

Burketown

LANGUAGE SPOKEN
Garrwa

238

People

98

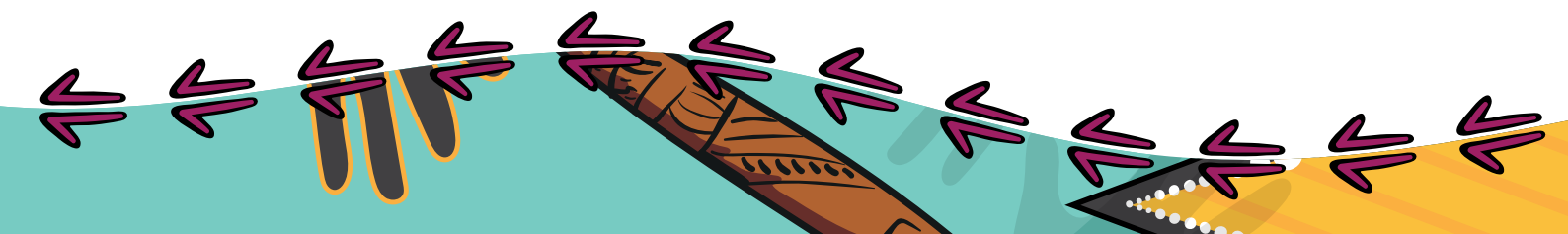
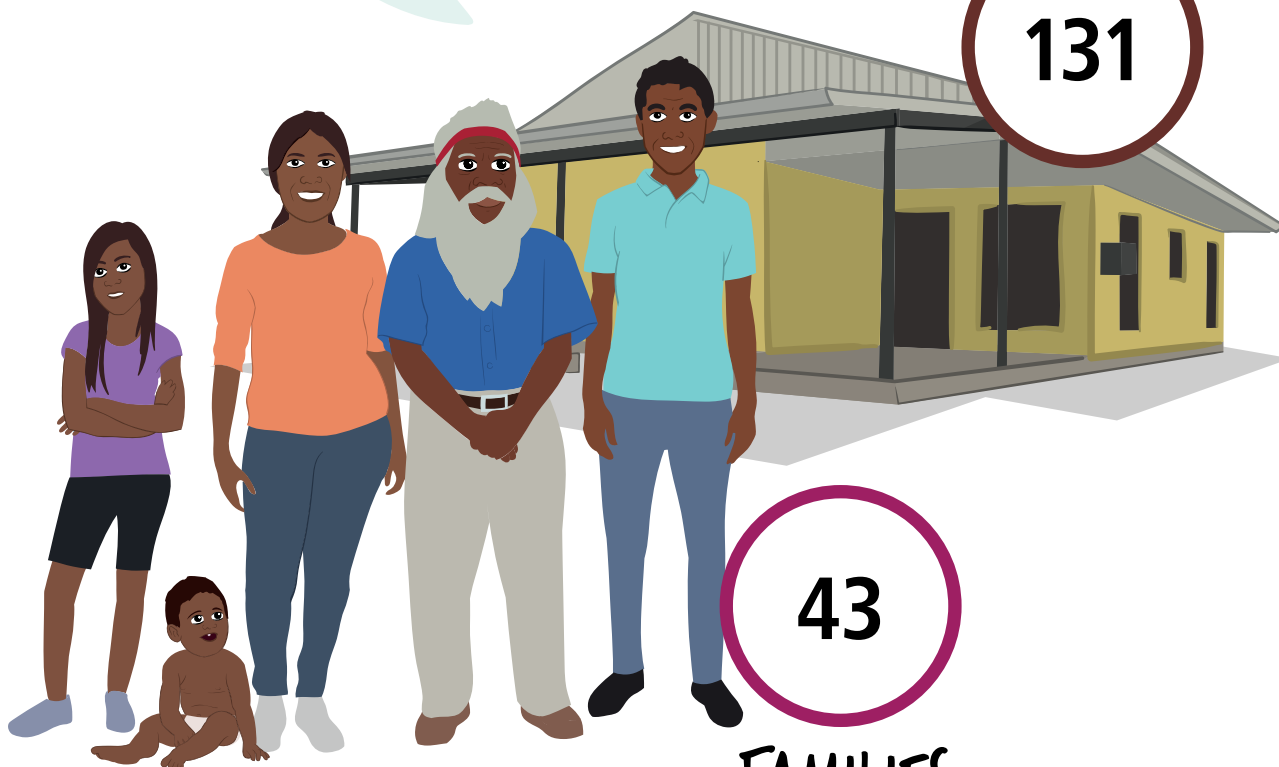
Aboriginal and/or
Torres Strait
Islander people

HOUSES

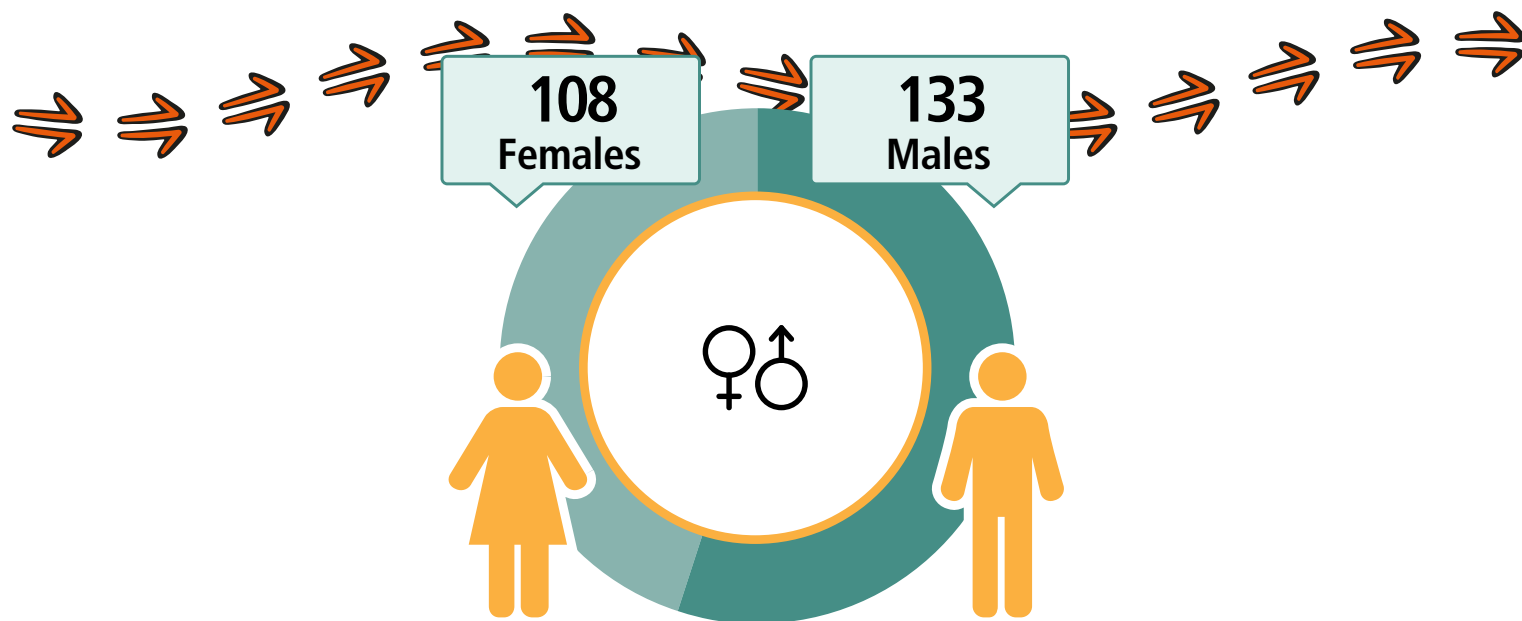
131

43

FAMILIES



Burketown



CARED FOR CHILDREN



15%

111
Working



\$789
Weekly Income



75
Students



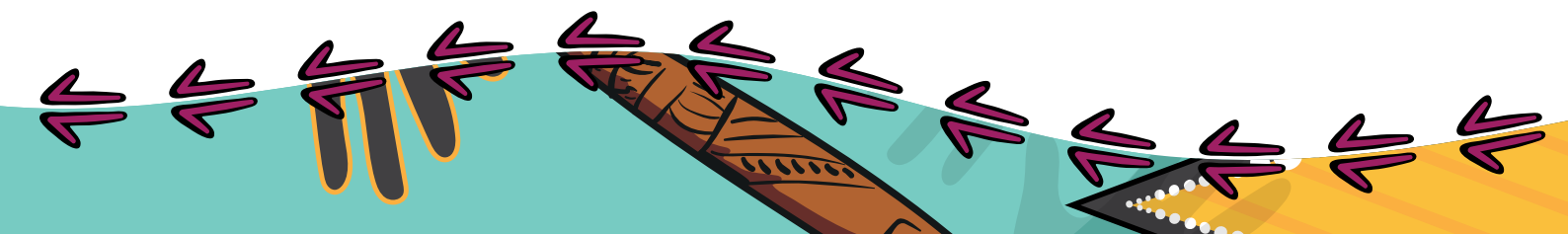
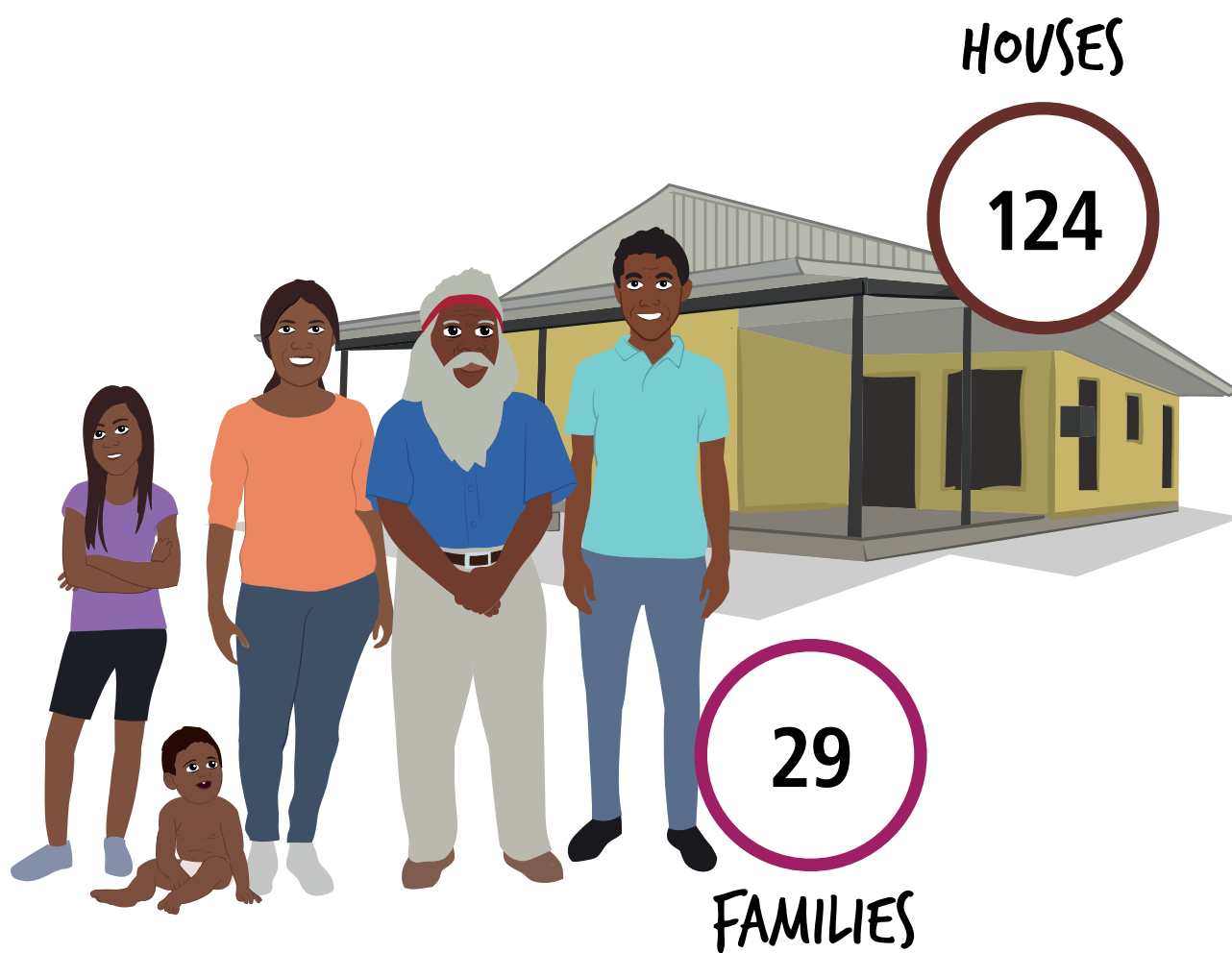
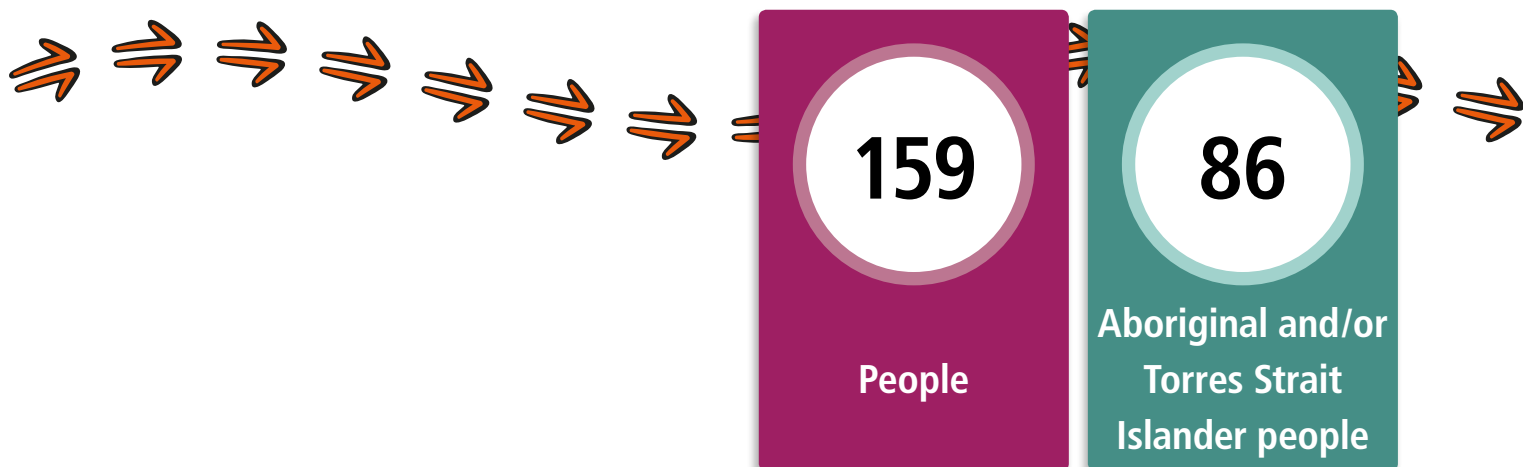
66
Completed
Year 12



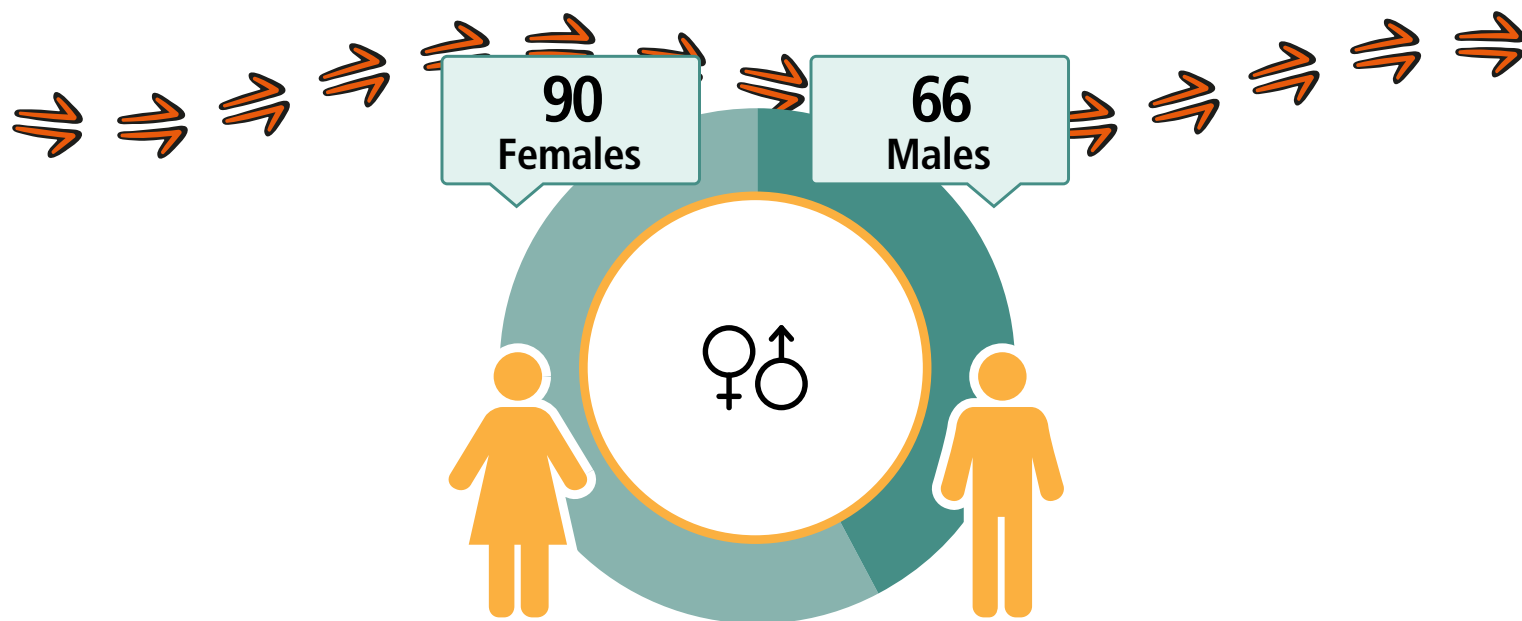
Geography: Burketown SSC

A decorative graphic at the bottom of the page featuring stylized hands in various colors (purple, teal, yellow) with arrows pointing in different directions, set against a background of wavy lines.

Camooweal



Camooweal



CARED FOR CHILDREN



12%

51
Working



\$637
Weekly Income



70
Students



26
Completed
Year 12



Geography: Camooweal ILOC

A decorative border at the bottom of the page featuring a stylized Aboriginal art pattern with various colors and shapes, including a large yellow and black design on the left and a green and black design on the right.

Cloncurry - McKinlay

LANGUAGE SPOKEN
Alyawarr

3 828

People

726

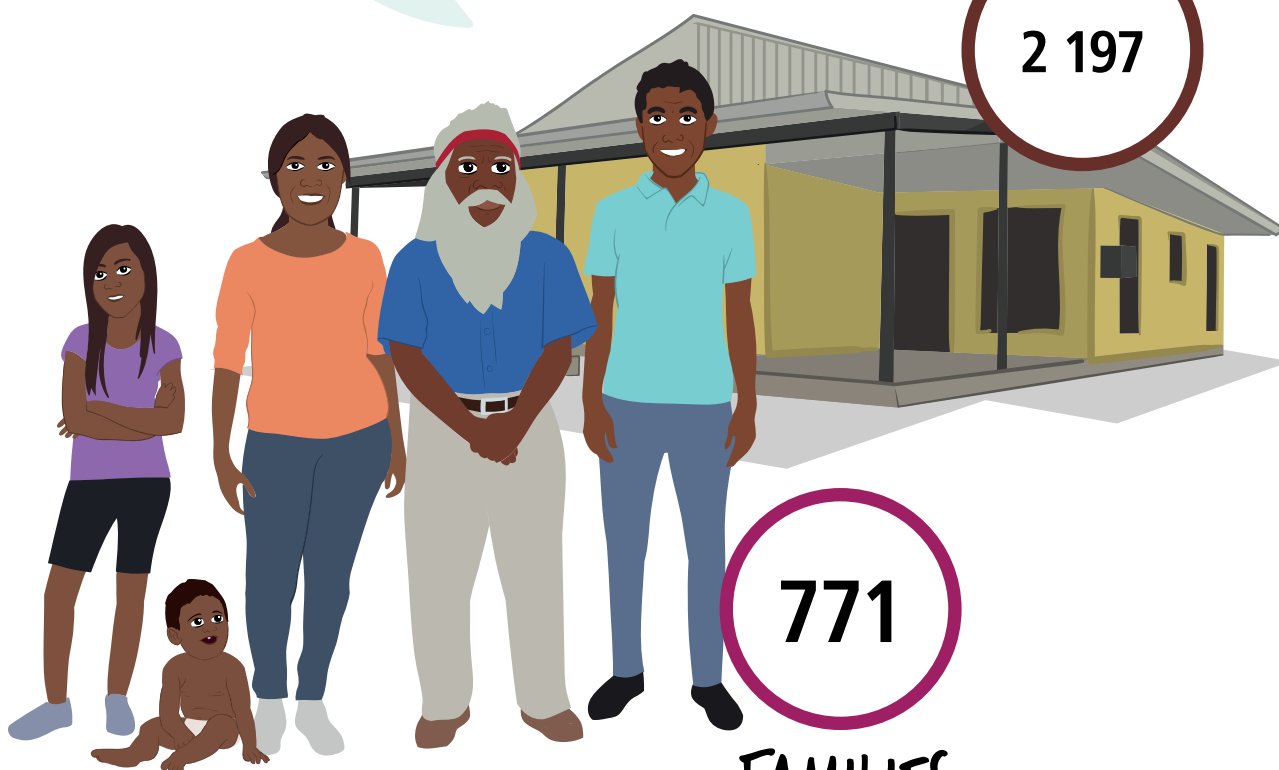
Aboriginal and/or
Torres Strait
Islander people

HOUSES

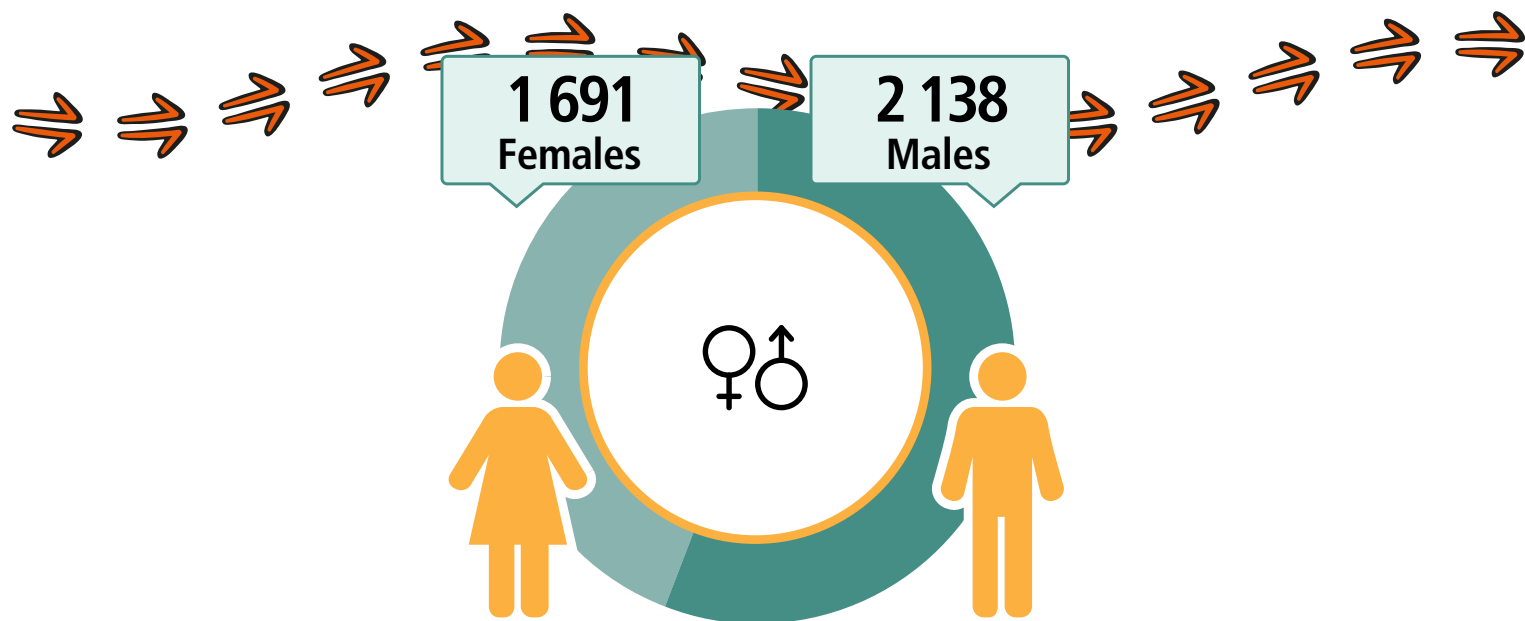
2 197

771

FAMILIES



Cloncurry - McKinlay



CARED FOR (CHILDREN



25%

2 005
Working



\$958
Weekly Income



1 125
Students

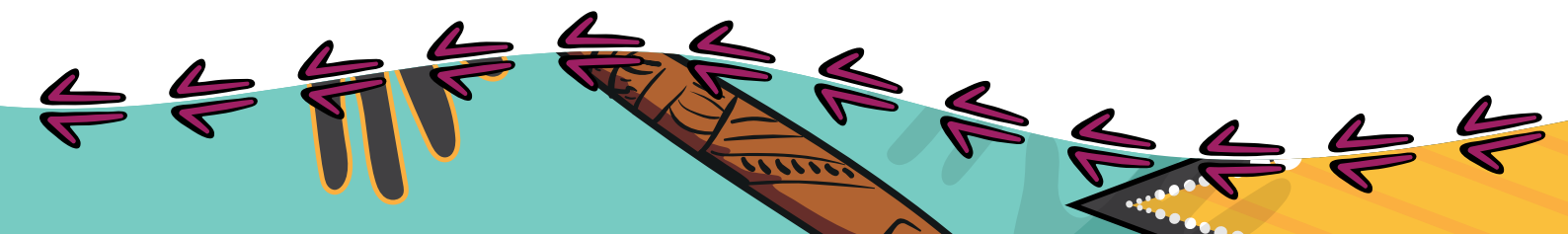
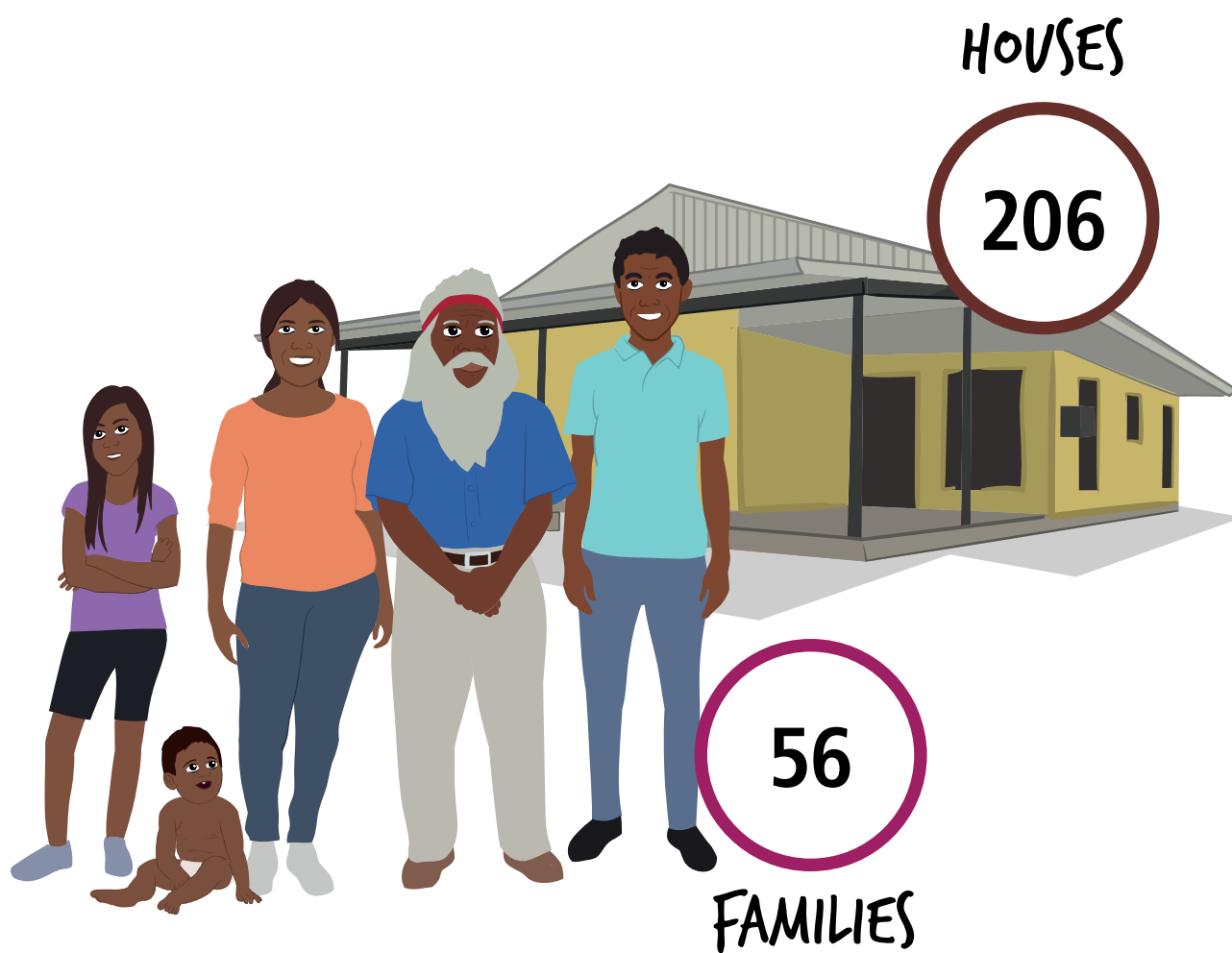
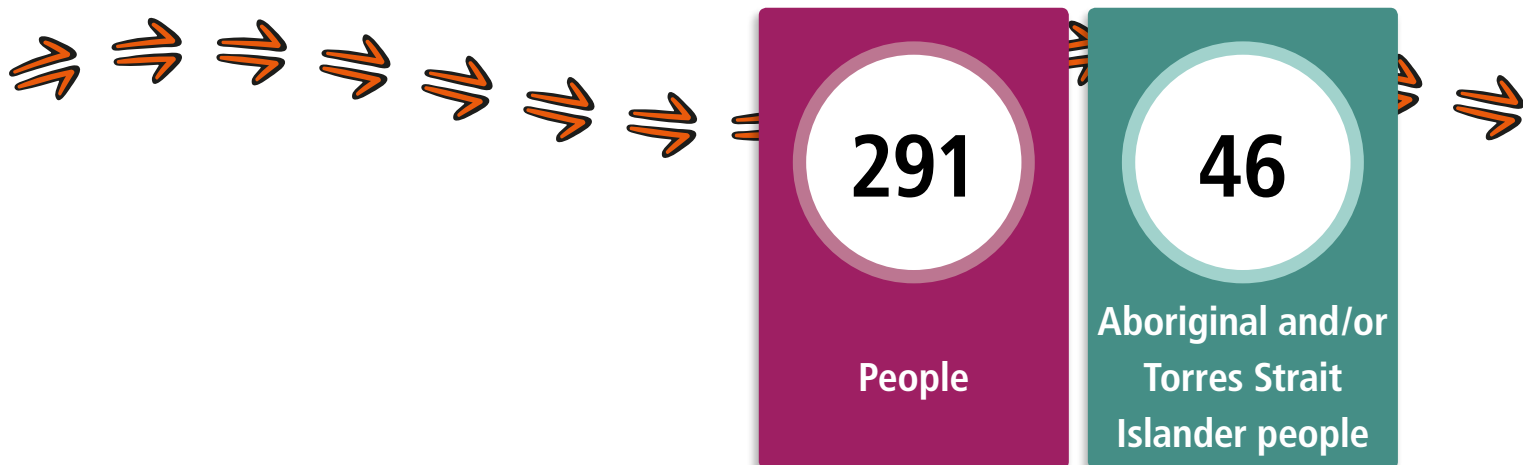


1 213
Completed
Year 12

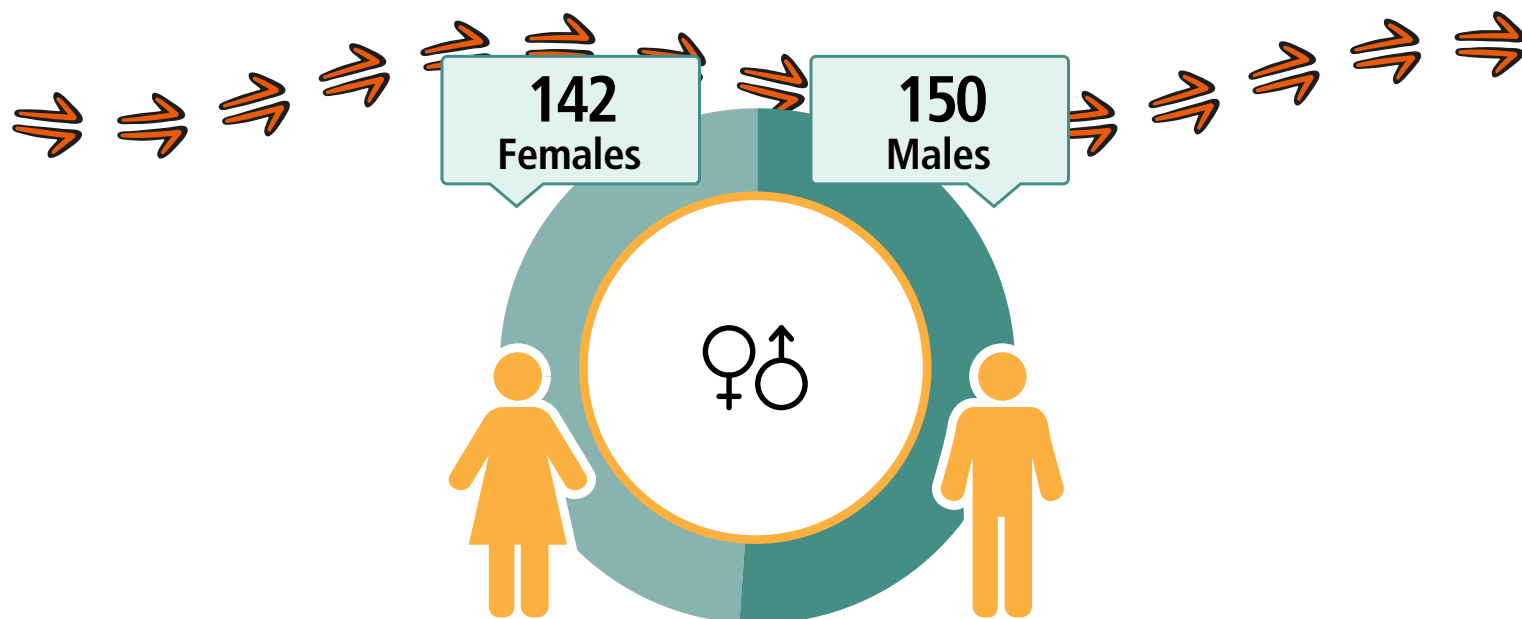


Geography: Cloncurry - McKinlay ILOC

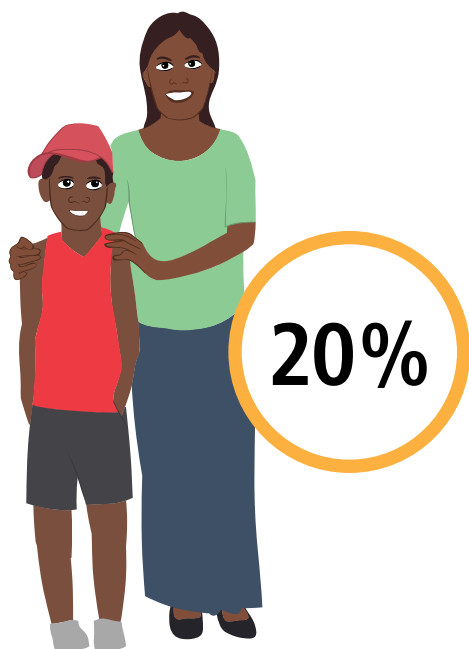
Diamantina



Diamantina



CARED FOR CHILDREN



163
Working



\$749
Weekly Income



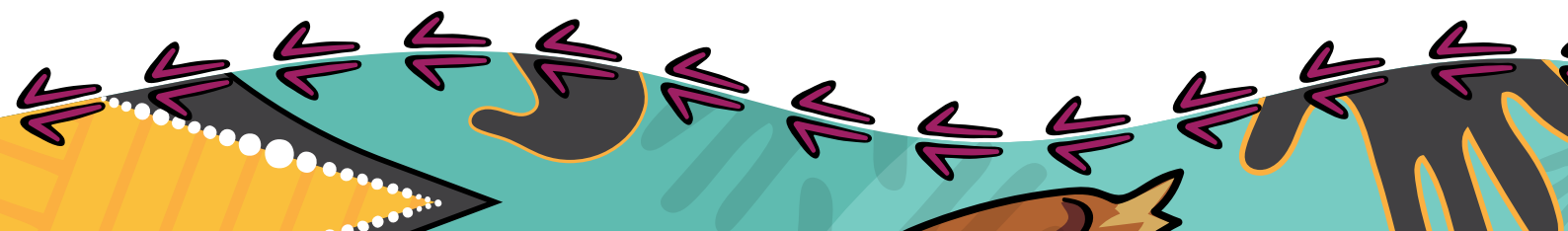
95
Students



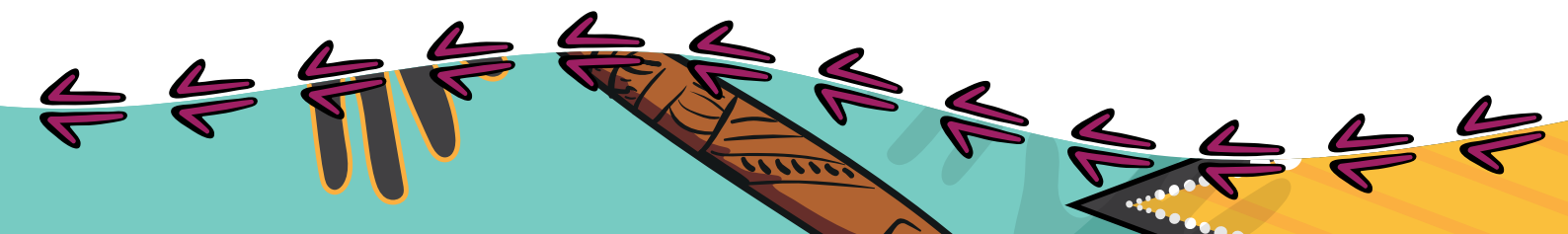
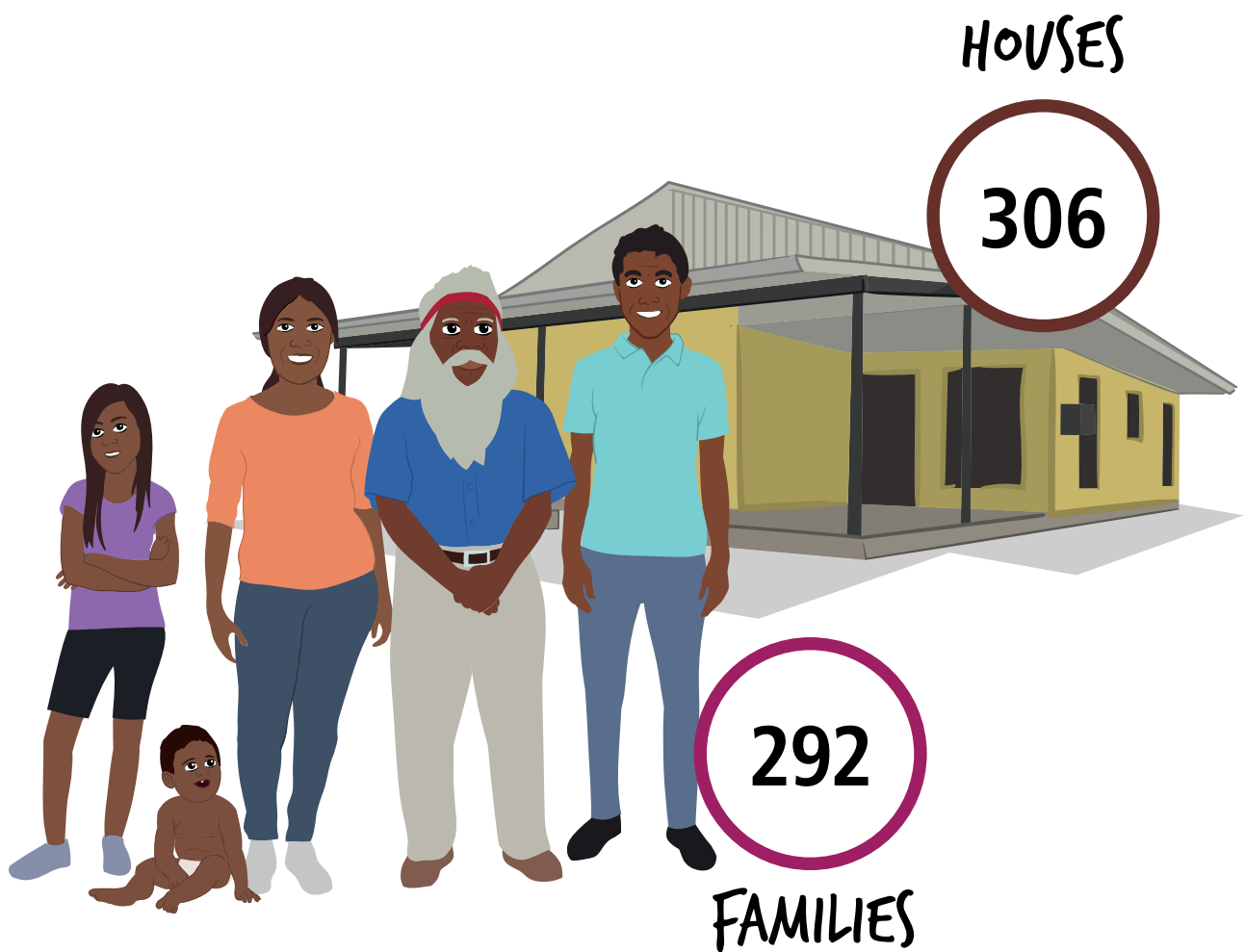
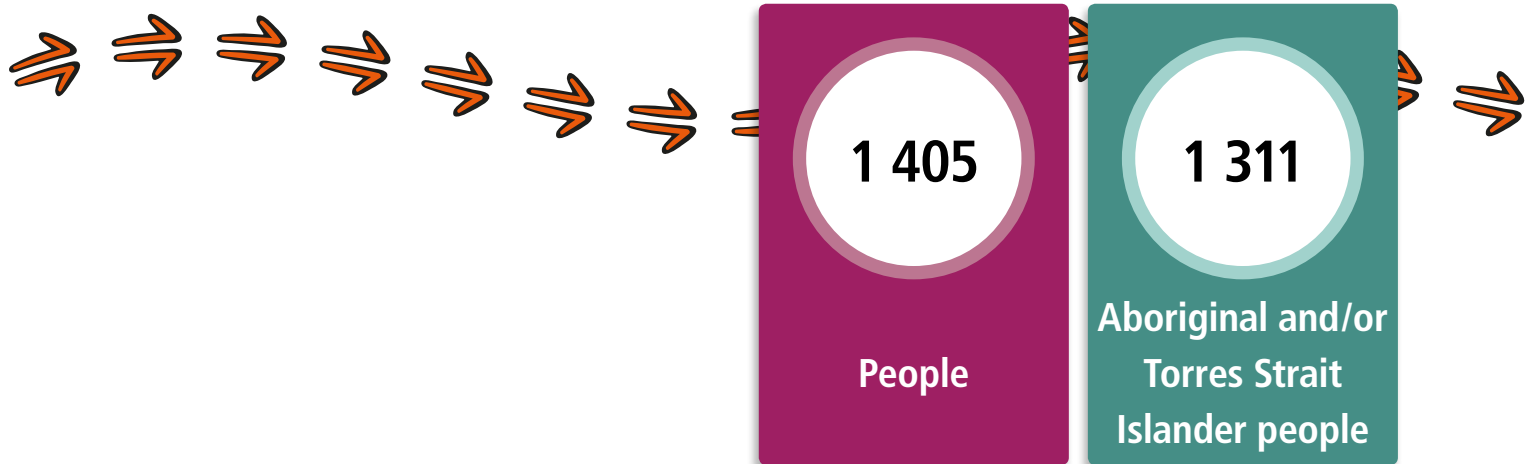
103
Completed
Year 12



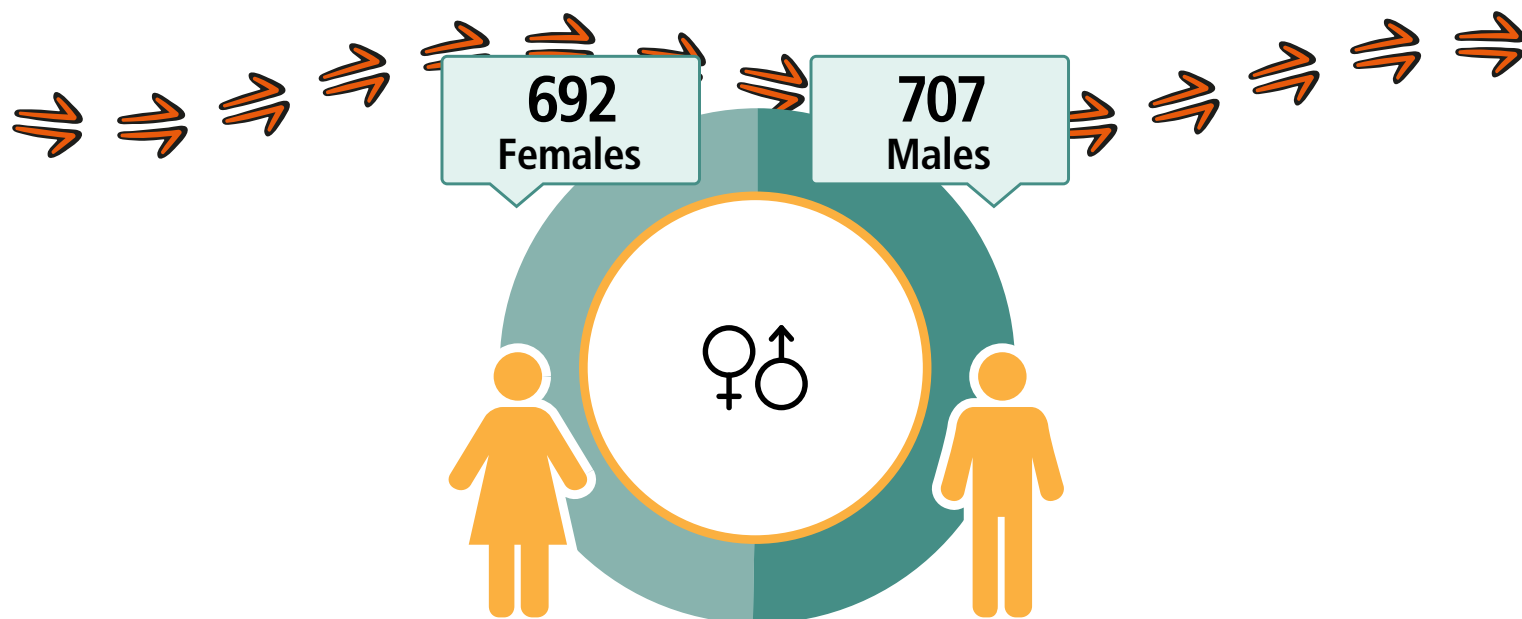
Geography: Diamantina ILOC



Doomadgee



Doomadgee



CARED FOR CHILDREN



45%

282
Working



\$298
Weekly Income



486
Students



129
Completed
Year 12



Geography: Doomadgee ILOC

A decorative border at the bottom of the page featuring a stylized Aboriginal art pattern. It includes a yellow and orange striped area on the left, a teal wavy line, and various purple and black arrow-like shapes pointing in different directions.

Mornington

LANGUAGE SPOKEN
Lardil

1 143

People

979

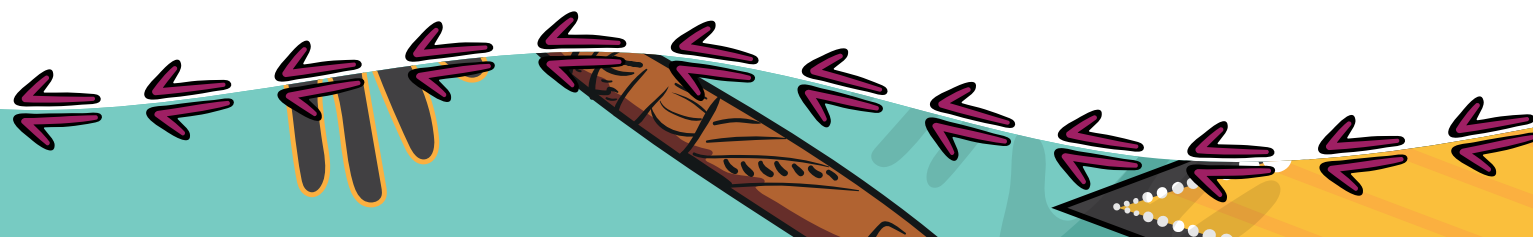
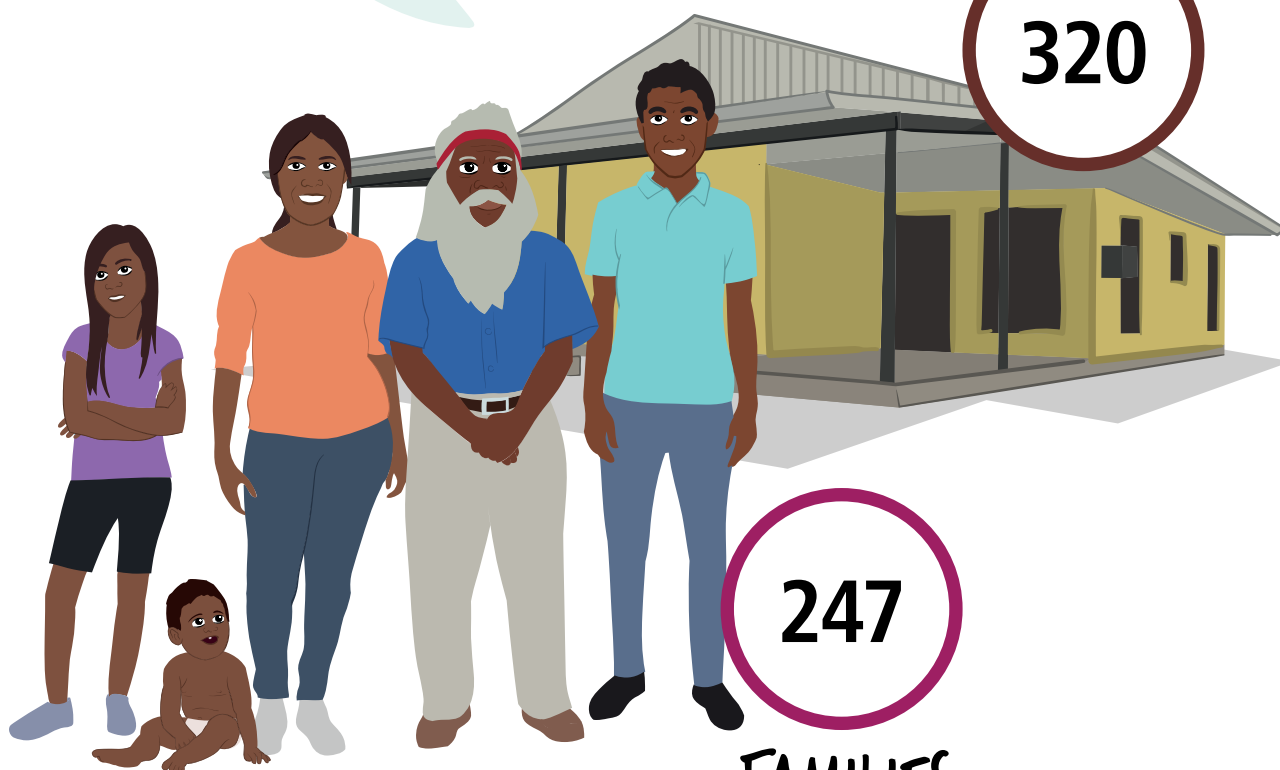
Aboriginal and/or
Torres Strait
Islander people

HOUSES

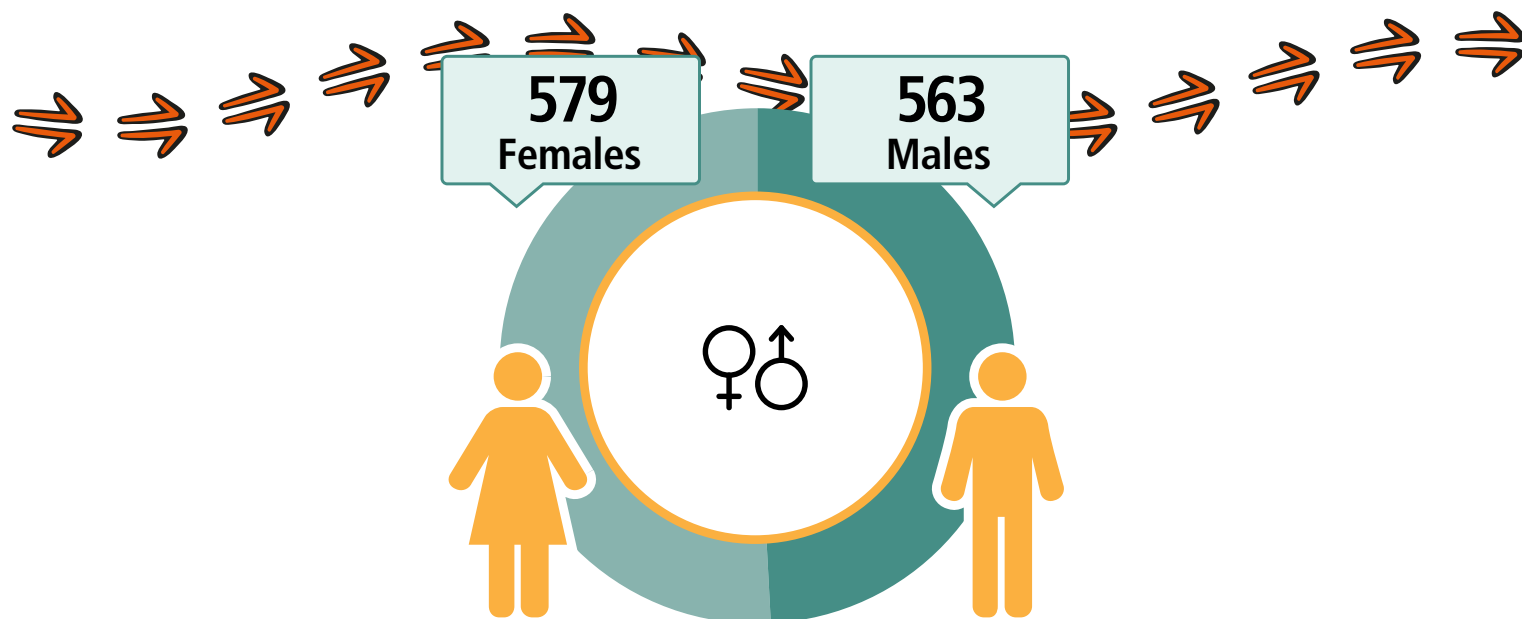
320

247

FAMILIES



Mornington



CARED FOR CHILDREN



42%

314
Working



\$354
Weekly Income



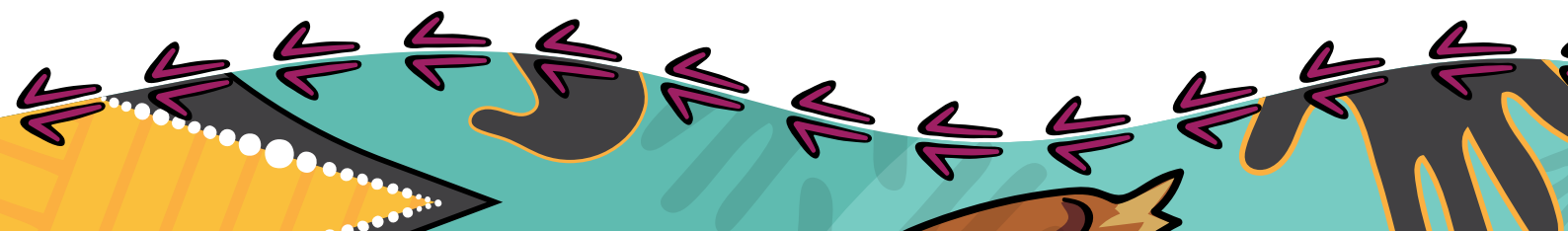
391
Students



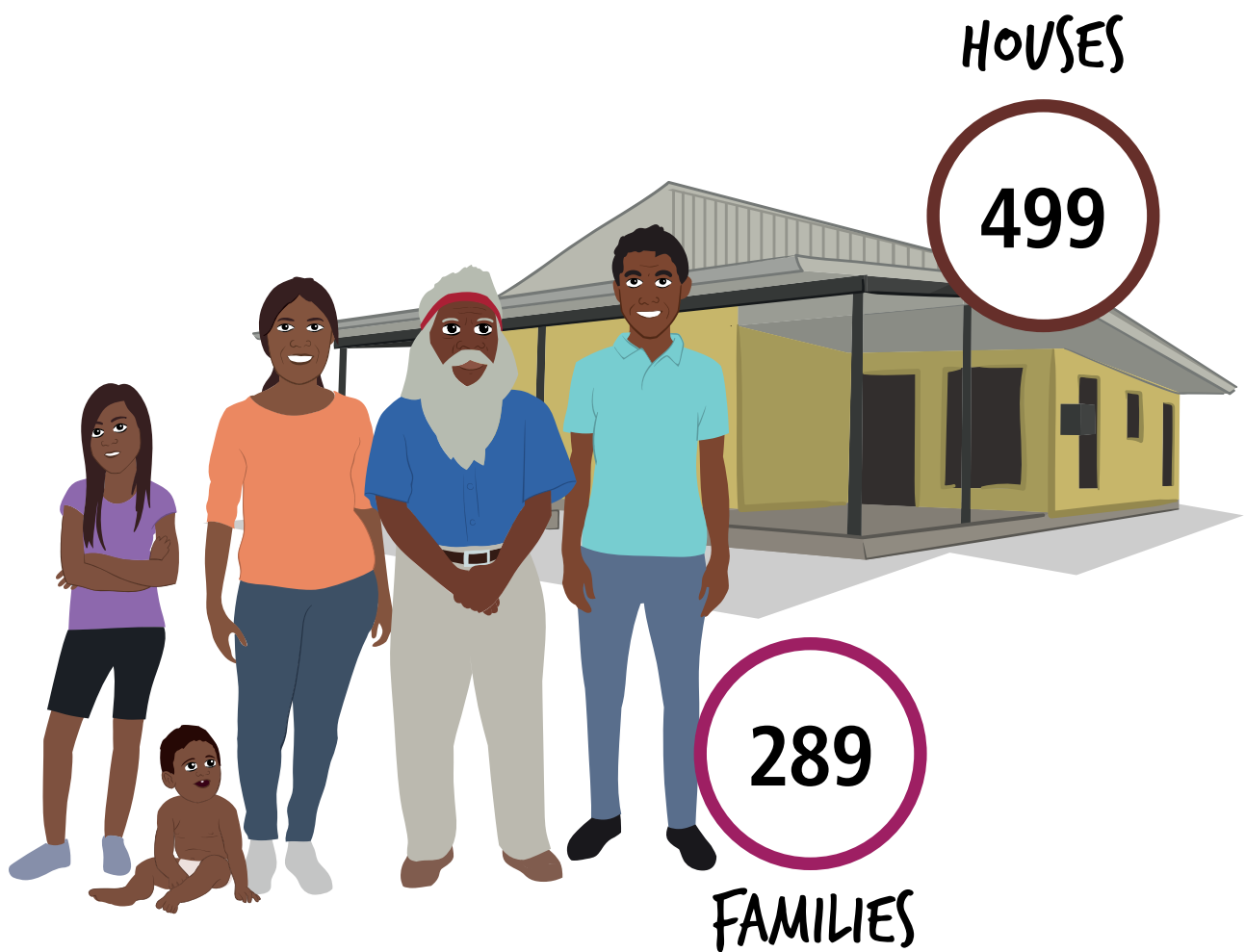
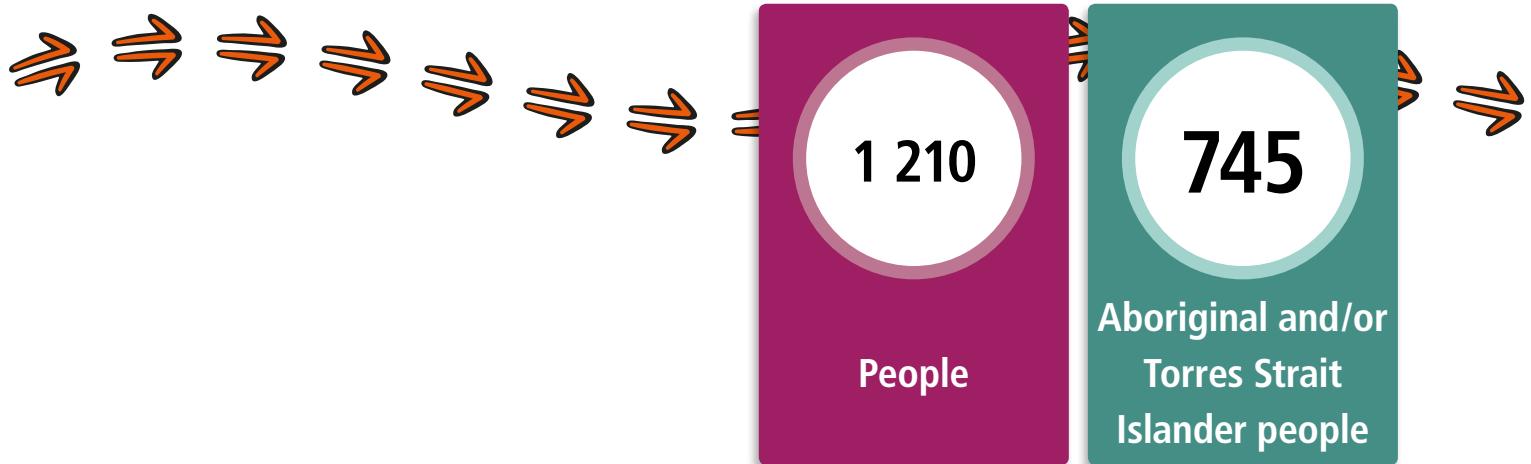
194
Completed
Year 12



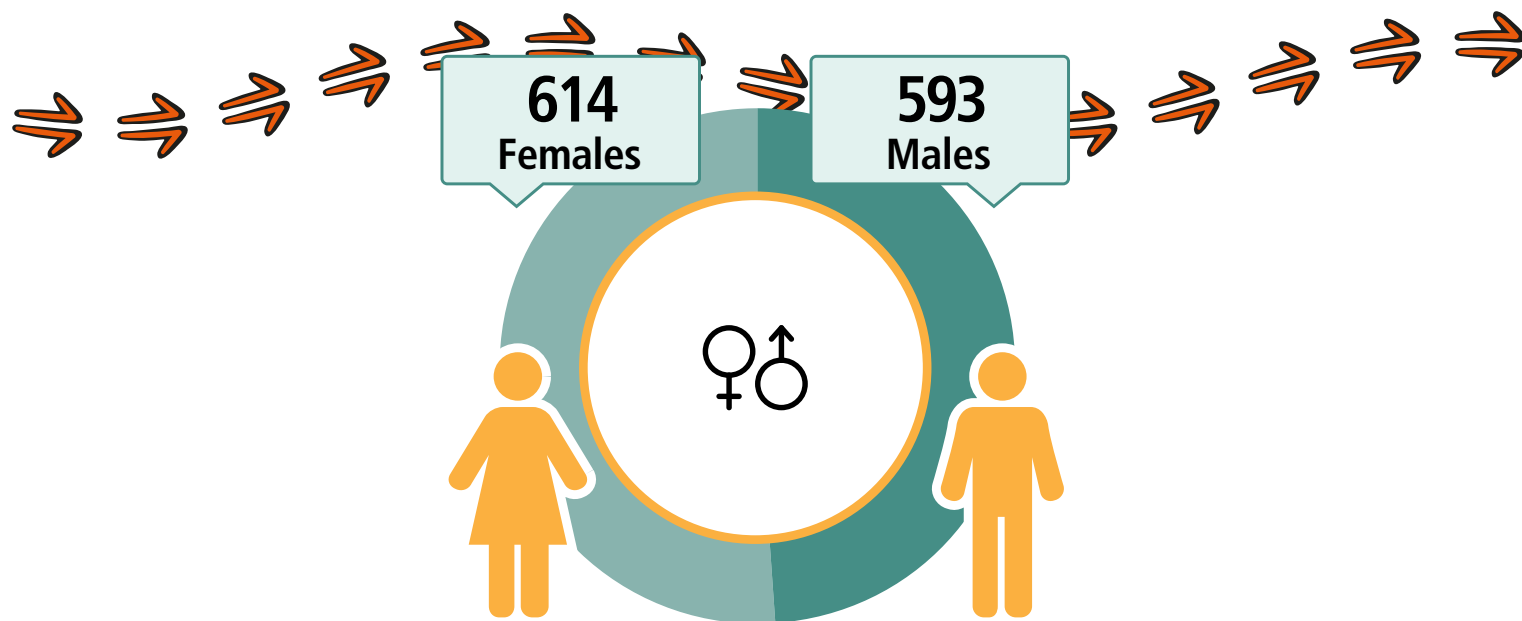
Geography: Mornington ILOC



Normanton



Normanton



CARED FOR (CHILDREN



23%

438
Working



\$669
Weekly Income



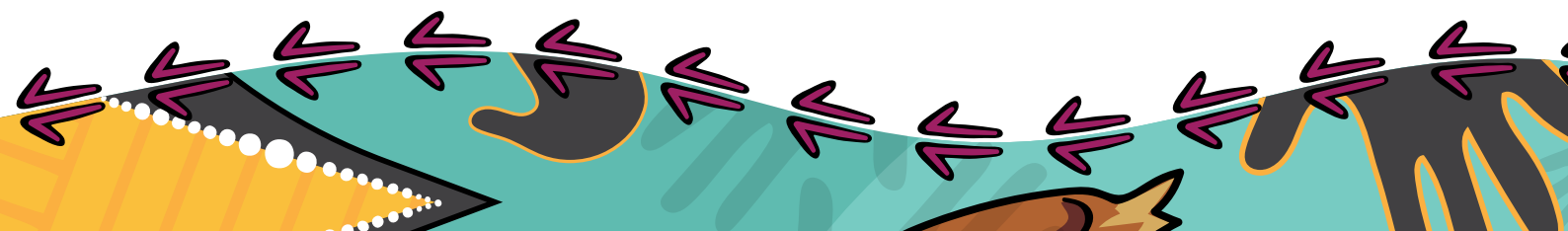
355
Students



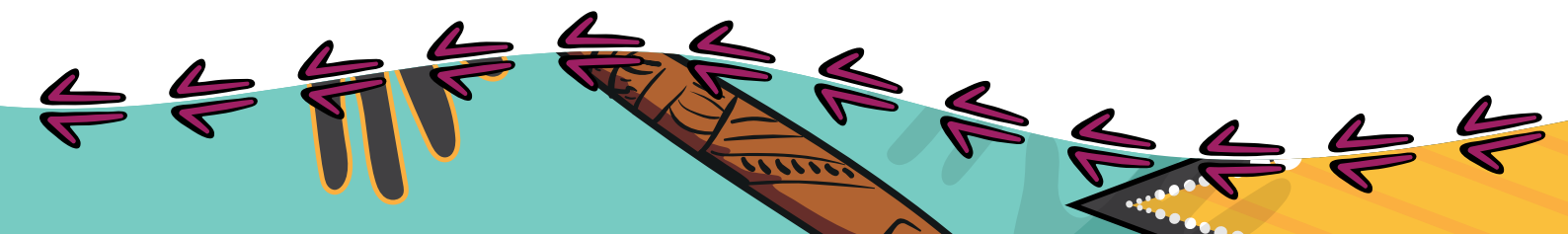
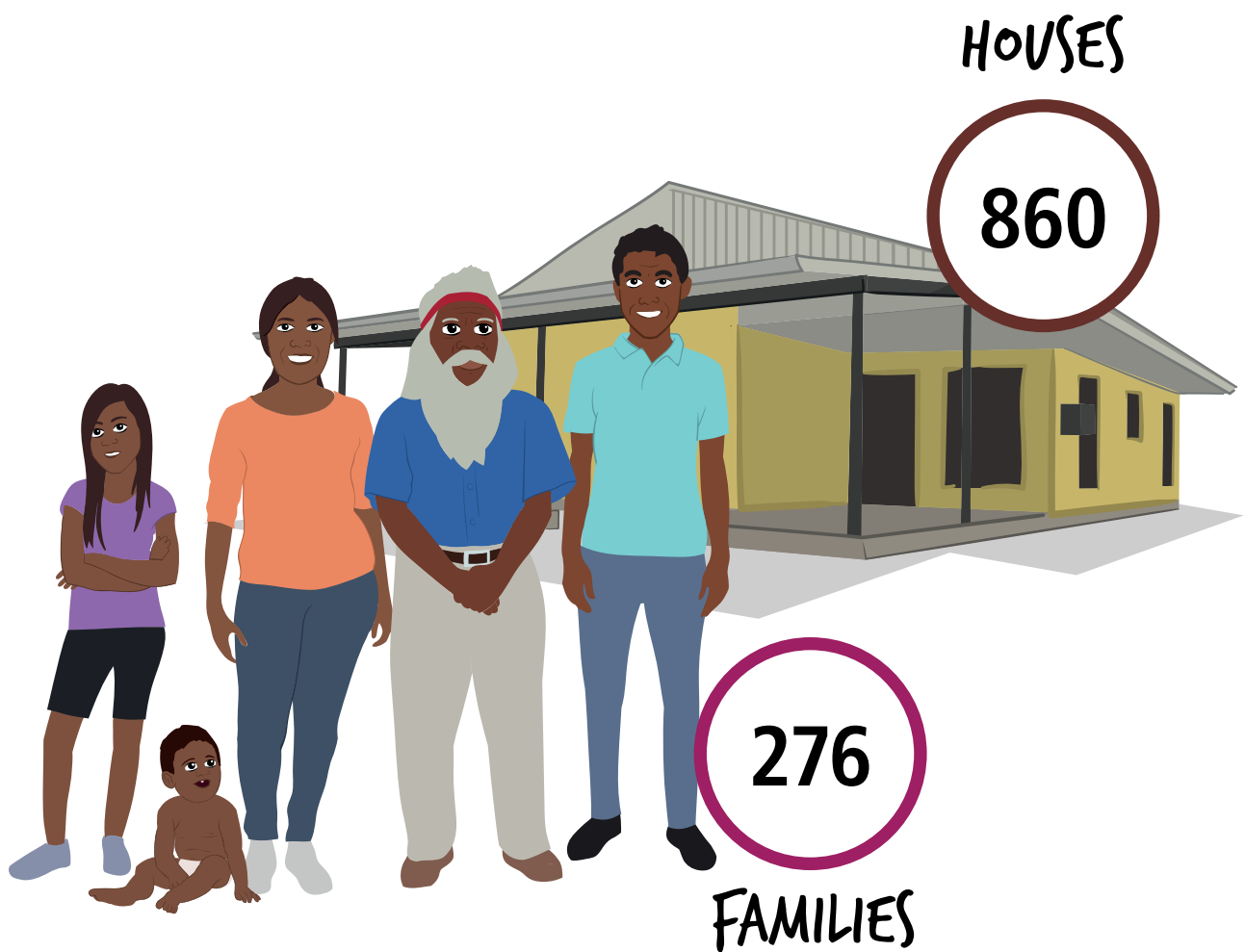
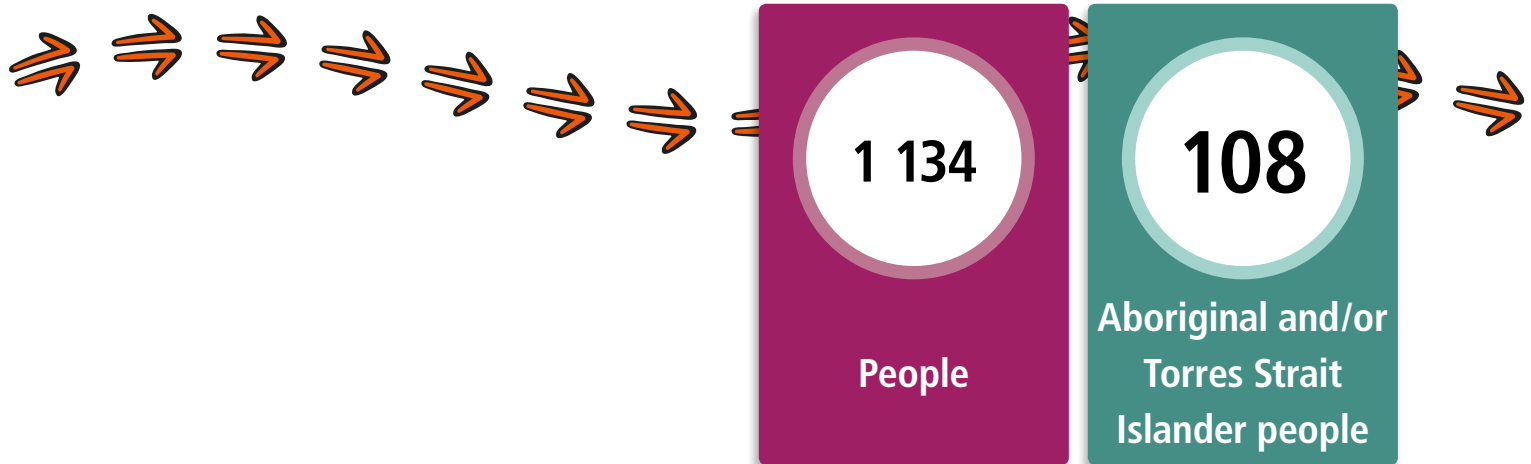
241
Completed
Year 12



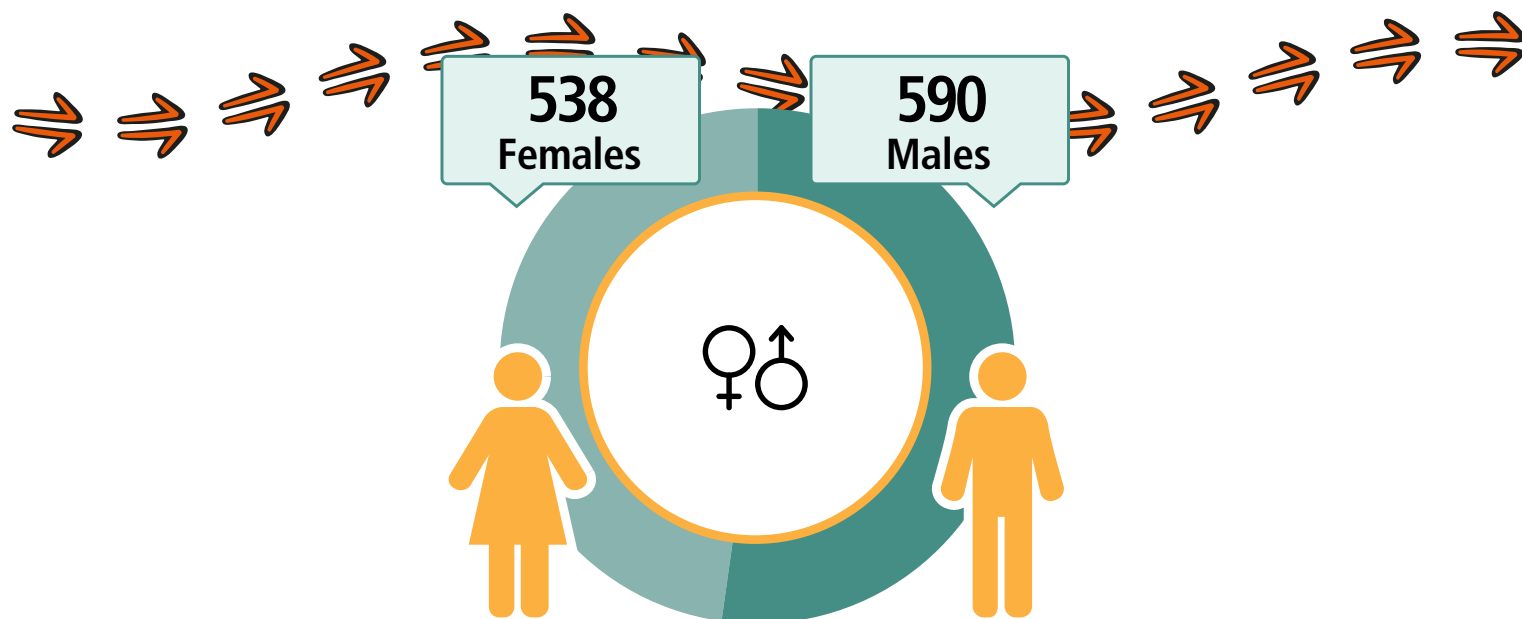
Geography: Normanton ILOC



Winton



Winton



CARED FOR CHILDREN



23%

567
Working



\$658
Weekly Income



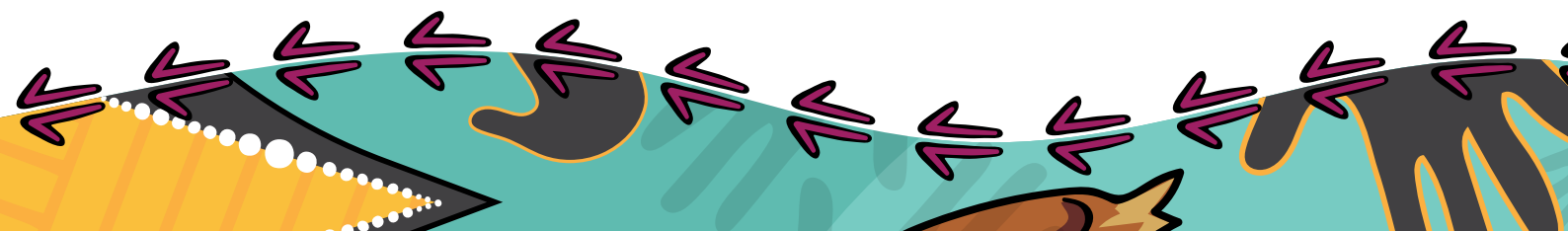
288
Students



331
Completed
Year 12



Geography: Winton ILOC





Know more

You can find more information on your region for free at www.abs.gov.au/census using these data products.



Contact the Centre of Excellence for Aboriginal and Torres Strait Islander Statistics

Phone: 1300 135 070

Email: CoEATSIS@abs.gov.au

Disclaimer

The data displayed for the purposes of this publication may slightly differ to other Census products available on the ABS website.

All data in this publication is based on Total People, Total Dwellings and Total Families for each area.

Community names are generally based upon a commonly identified name or combination of names for the area/community. It is acknowledged that some communities may have an alternative name or different spelling.

Confidentiality

By law, your personal information is kept private and will not be shared with anyone. The ABS makes sure that no one can be identified by the information in this book.

